



DEFRA  
EXEMPT



# Celsius Stove System

Ecodesign efficient stove with a volcanic pumice chamber and chimney blocks supplied

Approved for installation and use in Smoke Control Areas

[www.schiedel.com/uk](http://www.schiedel.com/uk)

SAP Issue 1 - 940003847 - October 2020



The Celsius system is a DEFRA exempt, modern fireplace insert, generating energy efficient warmth and comfort, as well as style.



The package is available in separate blocks, with all materials included for an installation in a new build, major renovation or a luxury home.



**DEFRA EXEMPT** The Celsius is approved for installation in Smoke Control Areas in the United Kingdom, when operated in accordance with the instruction and installation manuals and when any conditions are met.

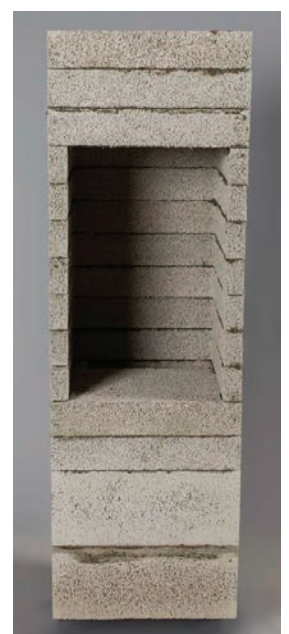
Level 5 of the clearSkies mark is the highest possible energy efficiency rating available.



The insert stove comes with 2 convection grills to get the best possible distribution of heat. The grills are available in black or white. The fresh air supply to the Celsius insert is integrated within the chimney system.

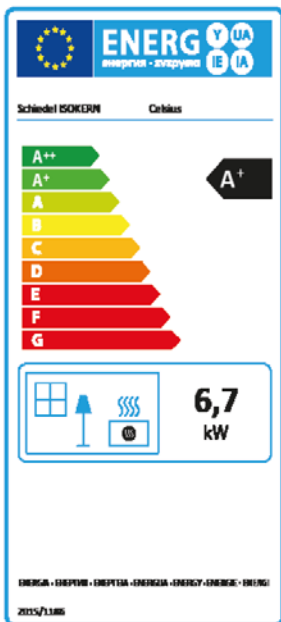
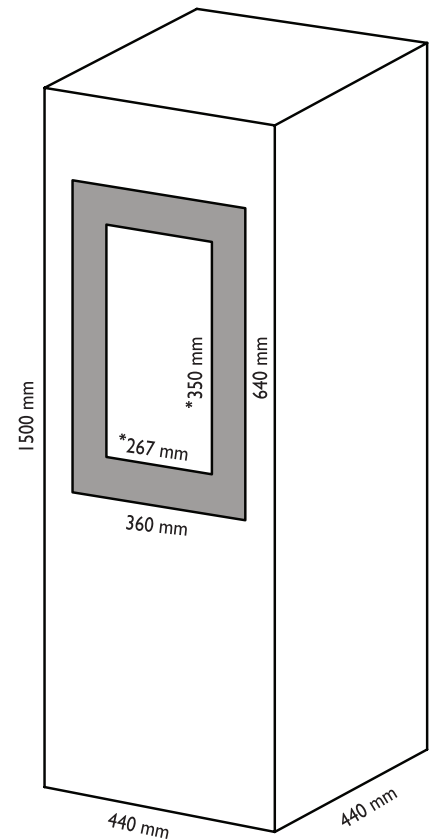
Celsius has a standard height of 1500 mm, but since the frame and chimney have the same dimensions, the height can easily be changed with additional chimney modules.

Being formed from volcanic pumice, the Celsius system is simple and lightweight giving you clean lines and the smallest possible footprint to construct, and can be placed with 0 mm distance to combustible material from the back, and with only 300 mm from the sides. Once rendered the system can be painted.



# Easy to build - lasts a lifetime

- Simple and timeless design
- Block system can be supplied pre-built or as separate blocks.
- Can be placed with 0 mm distance to combustible material on the back and 300 mm to the sides
- Can be placed anywhere in the house as the air supply is integrated.
- Can be integrated into a non-combustible wall, saving space
- No high temperatures on surfaces of frame and surround
- Convection insert, which distributes heat in rooms
- Extremely energy efficient A+ rated
- Environmentally friendly combustion - clearSkies Level 5
- CE marked solution
- DEFRA exempt appliance for use in Smoke Control Areas



Technical	CELSIUS
Width	440 mm
Height	1500 mm
Depth	440 mm
Weight	240 kg

Efficiency	CELSIUS
Output	6.7 kW
Efficiency	A+
Energy Efficiency	83 %
Air Independent	✓

Air Independent	✓
DEFRA Exempt	✓
clearSkies Level 5	✓
Danish Technological Institute DS/EN13240/A2:2004   Norwegian Standard NS3058 and NS3059 (PM Measurement)   European Standard EN16510-1:2018	



**DEFRA EXEMPT**  
The Celsius is DEFRA Exempt so it can be installed and used in Smoke Control Areas in the United Kingdom, when operated in accordance with the instruction and installation manuals and when any conditions are met.



**CLEARSKIES LEVEL 5**  
Celsius has achieved the highest level in clearSkies certification, which means that it exceeds the minimum performance level for Ecodesign Regulations.

# Pumice – naturally better

## Resistant to temperature change

Pumice has very little expansion and contraction with temperature change. This reduces the possibility of cracking and structural damage that can occur with other products.

## High insulation properties

Pumice is a natural insulator, able to maintain the temperature of flue gases when other products have allowed the temperature to fall below the dew point.

## Lightweight

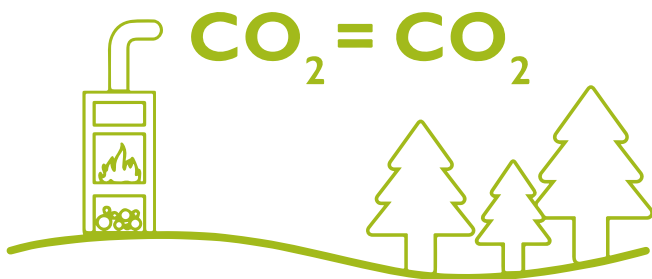
Pumice is strong yet lightweight allowing one person to lift and build the chimney units.



Pumice is naturally sourced from the Hekla Volcano in Iceland, which means it is an excellent insulator, keeping flue gases warm while not transmitting heat to the outside.



# Heating with wood



## Renewable resource

Wood is a renewable resource that burns only as much carbon dioxide (CO<sub>2</sub>) as it releases from natural decomposition in the forest or as much as the tree captured from the atmosphere during its growth.

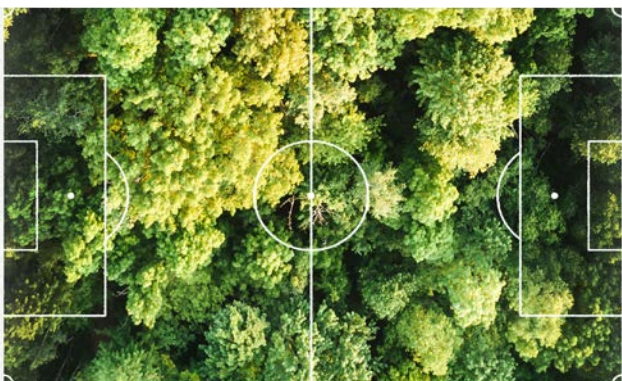
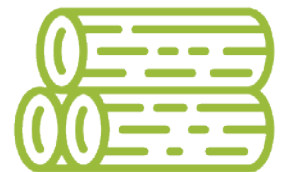
## High energy value

Firewood has a high energy value. For example, take oak: whilst it has a residual wood moisture content of approx. 15–20%, its calorific value adds up to 4.2 kWh per kilogram.

9% (2020)



13-15% (2035)



## European forest is growing

30% of annual forest growth remains in the forest. The area of European forests is increasing by the size of a football field every minute, increasing the potential for carbon capture in the coming decades.

30% of the annual forest increment remains in the forest.

# The spark in all of us

The spark in all of us is an internal north star and constant driver of all our ideas and actions. An irrepressible force of nature that constantly pushes us forward and helps us to leave old things behind.

It is the source of our inspiration to make things better, smarter, more sustainable and stay ahead of the game. The spark of our inspiration also jumps over to the people we deal with: our partners, our customers.

## THE SPARK

### STANDARD-SETTER

We spark tomorrow's industry standards & trends.

### PASSIONATE

New ideas for future buildings are constantly sparked by our ingrained passion for smarter, more liveable, sustainable solutions.

### CARING

We value and nurture the spark that our people carry and how they transfer it over to our customers.

### PARTNERSHIP-ORIENTED

We pro-actively seek our customers feedback to let their needs spark inspiration for new technical solutions and services.

It is in our DNA to answer important questions: How does a modern chimney or fireplace need to look like, to make people happy? What exactly is it, that "sparks" a home with warmth, inspiration and a feeling of cosiness and independence? To answer these questions, we address relevant future trend topics: families, sustainability, product & design and industry.

THE SPARK is our motto under which we want to shed light on future opportunities and how to actively use them.

# Spark up your life

The spark is what drives us at Schiedel, and so, looking ahead, we are pro-actively facing one question: what will the future hold for us? Only by understanding the key challenges and their effects on our future lives, Schiedel will be able to continue its standard-setting ambitions.

Discover more about the future trends "family", "sustainability", "product & design" and "industry".

## FAMILIES



Spending more time at home is becoming an increasingly desirable goal for many people. Thanks to online shopping and home office,

there are even more reasons to create a beautiful home. At home, families strive for maximum comfort – which leads to high expectations when it comes to aesthetics, functionality and, last but not least, convenience. Furthermore, the seamless integration of products into smart homes and on-demand services is of great importance. We are already trying to meet those requirements and contribute to space saving, cosy homes for today's and future homeowners.

## SUSTAINABILITY



At no time it has ever been more important for us at Schiedel to offer customers long-term solutions based on sustainability.

Both, you as a customer as well as we as a company want to pro-actively change the world together.

At Schiedel, we care deeply about the environment; we focus on environmentally friendly and energy-efficient, low-energy solutions, like new filters, hybrid vents and thermo block stones. With the Celsius System, we already provide an energy efficient, and low emission solution suitable for passive energy houses.

## PRODUCT & DESIGN



On top of products being valuable and useable, we also need to build products and experiences that are enjoyable – focusing on

how the things we have created make people feel. At Schiedel we learn from and grow with our customers. We design and constantly adjust solutions that are based on customer needs, creating product features that exceed existing norms: clear, simple and effective design that radiates peace, improves well-being and saves space. A Celsius fire creates higher living comfort, quality of life and bring safety and independence to our customer's homes.

## INDUSTRY



Climate change and extreme weather phenomena affect industry and economics on many different levels.

The number of conscious consumers is growing. We are called upon to take these changes into account when it comes to developing new products as well as innovative services. On our mission to produce sustainably, we will continue to use and search for renewable resources and look for new ways to reduce waste. Internally, we constantly push towards the future through constantly improving our production setup, BIM Offering and 3D CAD.



Schiedel Isokern  
Unit 8/9 Block A, Holton Road,  
Holton Health Industrial Est., Poole  
BH16 6LG  
T +44 1202 861650

[sales.uk@schiedel.com](mailto:sales.uk@schiedel.com)  
[www.schiedel.com/uk](http://www.schiedel.com/uk)



Follow us on Social Media @SchiedelUK



A **stañdard**  
INDUSTRIES COMPANY