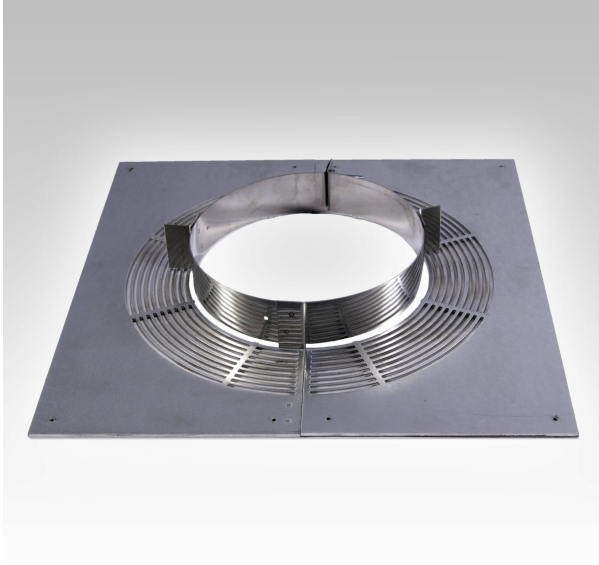




## Combustible floor - G60 rectangular ventilated support plate - 2 piece



## VARIATIONS

SKU	Int mm	Ext mm	Price
177706	180	230	
177705	150	200	
177707	150	200	
177704	130	180	

## PRODUCT DESCRIPTION

Specification	Data
Fuel type	Wood only
Diameter (internal)	130-200
Diameter (external)	180-250
Wall thickness (internal)	0.5mm
Insulation thickness per diameter	25mm
Weight per diameter (kg/m)	5.8 kg /m - 8.4 kg/m
Outer case thickness	0.6mm
Flue gas temp (dry)	450°C
Inner liner material:	high grade stainless steel liner 444 : 1.4521
Outer case material:	Painted black (RAL 9005)
Insulation type:	Superwool blanket
Thermal expansion	18mm
Max. length free standing:	2.0 m above the last support
Max. support spacing	3.0 m



Average thermal resistance (200°C)

0.37m<sup>2</sup> k/W

## CORROSION RESISTANCE

Chimneys are subject to significant corrosion attack by flue gas condensates, particularly from solid fuel. Permeter Smooth is specifically designed and manufactured to resist this corrosion.

## CHIMNEY DIAMETER

The chimney size should be as recommended by the appliance manufacturer. Where there is a requirement for a flue diameter smaller than the appliance spigot, then the operational requirements of the appliance and the configuration of the flue must satisfy the flue sizing requirements of EN13384-1 for single appliances, and EN13384-2 for multi appliances.

[Permeter Smooth brochure](#)

[Permeter Smooth installation instructions](#)

For stove and chimney installers – whenever you register an installation with our easy to use, online guarantee registration portal, you will now accrue points based on the number of installations. So [click here](#) to start and register your installations, taking full advantage of our Lifetime Guarantee on Flex and ICID, as well as guarantees on all our other ranges, and to start earning points

Permeter Smooth is CE Certified to EN 1856-1:2009 with designations:

- T450 N1 D V2 L99050 G60 – System chimney (Ø130 & 150mm)
- T450 N1 D V2 L99050 G75 – System chimney (Ø180 & 200mm)

Warranty is 10 years,

## FREE Access to advanced CAD modelling files.

Please visit our external BIM (Business Information Modelling) for access to advanced modelling files in a number of formats. Please note that you will have to register and login for access to the files.

[Click here to access our BIM files.](#)