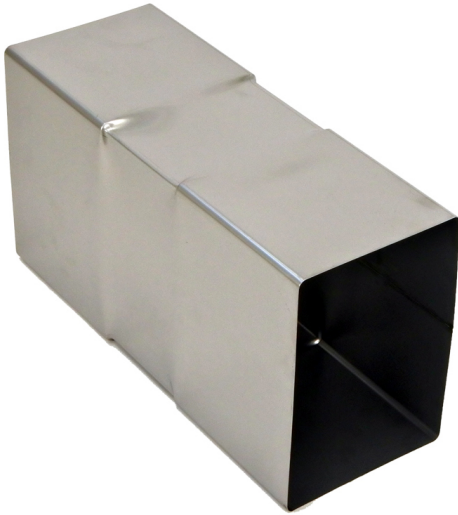




Extension casing (for use with MERE) - MEVRE 99



Extension casing (for use with MERE) - MEVRE 99 is part of the Schiedel ME range, which has a number of applications and advantages.

APPLICATIONS

- Shaft liner in renovation projects
- Air inlet & ventilation systems
- Flue system for condensing heaters and boilers
- Chimney renovation

ADVANTAGES

- Stress free thermal expansion
- Can be connected to MF flue system
- High quality stainless steel system
- High temperature silicone sealing ring
- Universal application
- Light weight system
- Chimney fire resistant

VARIATIONS

| SKU | Int mm | Colour | Price |
|--------|--------|--------|-------|
| 164890 | 080 | Plain | |

PRODUCT DESCRIPTION

ME system is a modular single wall flue/chimney system, made of stainless steel with a silicone sealing ring.



ME is a universal flue/chimney system which is suitable for both high and low temperatures, non-condensing and condensing applications with flue gasses under positive and negative pressure. It can resist a chimney fire.

Therefore the system is suitable for a wide range of applications such as boilers, stoves, ovens and a ventilation system. The system can also be used for CHP applications, in this case a special VITON® sealing ring might be necessary.

Technical characteristics

| | |
|----------------------------|--|
| Application | System Chimney/Connecting Flue Pipe/Chimney Liner |
| Operating mode | Dry/wet |
| Pressure | N1/P1/H1 |
| Max. working pressure | 5000 Pa |
| Max. operating temperature | 600°C (negative pressure - N1 applications) 200°C (positive pressure - P1/H1 applications) |
| Soot Fire Resistant* | Yes (see G designations below) No (see O designations below) |
| Inner wall material | AISI 316L/EN 1.4404 |
| Inner wall thickness | Ø80 - Ø200: 0.4mm Ø250 - Ø300: 0.5mm Ø350: 0.6mm |
| Fuel type | Oil/wood/coal/pellets normal (wood)/gas |
| Sealant | Elastomer. (Where case flue gas temperatures exceed 200°C, sealants as well as the cap and door seals should be removed before installation) |



For stove and chimney installers – whenever you register an installation with our easy to use, online guarantee registration portal, you will now accrue points based on the number of installations and installation type. So start to register your installations, taking full advantage of our Lifetime Guarantee on Flex and ICID, as well as guarantees on all our other ranges, and to start earning points



ME
brochure [Download](#)



ME
DWG
files [Download](#)



ME DOPs
and
certificates [Download](#)

CE approved | EN 1856-1: System Chimney

T200 P1/H1 W V2 L50050 O30

CE approved | EN 1856-2: Connecting Flue Pipe

T200 P1/H1 W V2 L50050 O30 M
T600 N1 D V2 L50050 G400 M



CE approved | EN1856-2: Chimney Liner

T200 P1/H1 W V2 L50050 O

T600 N1 D V2 L50050 G

* Above CE designations refer to Ø80-300 – For larger diameters please contact us.