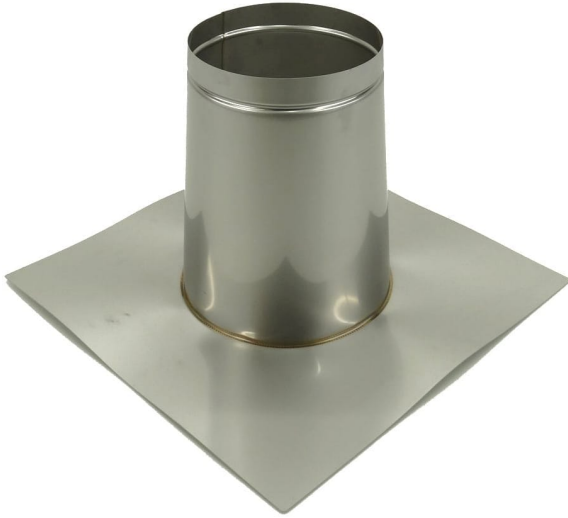




Flat roof flashing - MFDP



The Metaloterm® MF system is a modular twin wall insulated flue/chimney system, made of stainless steel, with a sealing ring. Metaloterm® MF is a universal flue/chimney system which is suitable for both high and low temperatures, non-condensing and condensing applications with flue gasses in positive and negative pressure. It can resist a chimney fire. Therefore the system is suited for a wide range of applications such as boilers, stoves and ovens. The product range also contains a wide variety of silencers. For Passive houses the Metaloterm assortment provides the Iso-block which can be combined with MF. The system can also be used for CHP applications, in this case a special VITON® sealing ring might be necessary. Due to the proven quality Metaloterm® MF has a 10 year guarantee.

APPLICATIONS

- Atmospheric gas-fired boilers
- Condensing boilers
- Wood-fired stoves
- Industrial ovens, large-scale establishments

ADVANTAGES

- Universal chimney/flue system
- Inner- and outer wall from high quality stainless steel
- No terminal bridges, uninterrupted insulation from base plate to top stub
- Stress free thermal expansion
- Fast-build system without the need of sealants
- Compatible with system Metaloterm® ME, UE and EN
- High density and high quality insulation
- High-temperature silicone sealing ring
- Lightweight elements
- Immediately ready for use
- Chimney fire resistant

VARIATIONS

SKU	Int mm	Colour	Ext mm	A	C	D	Price
-----	--------	--------	--------	---	---	---	-------



SKU	Int mm	Colour	Ext mm	A	C	D	Price
162237	100	Any Colour	Any Ext mm	Any A	440	160	
162238	130	Any Colour	Any Ext mm	Any A	470	190	
162239	150	Any Colour	Any Ext mm	Any A	490	210	
162240	180	Any Colour	Any Ext mm	Any A	520	240	
162241	200	Any Colour	Any Ext mm	Any A	540	260	
162242	250	Any Colour	Any Ext mm	Any A	590	310	
162243	300	Any Colour	Any Ext mm	Any A	640	360	
162244	350	Any Colour	Any Ext mm	Any A	690	410	
162245	400	Any Colour	Any Ext mm	Any A	740	460	
162246	450	Any Colour	Any Ext mm	Any A	815	535	
162247	500	Any Colour	Any Ext mm	Any A	865	585	
162248	600	Any Colour	Any Ext mm	Any A	965	685	

PRODUCT DESCRIPTION

The Metaloterm® MF system is a modular twin-wall insulated flue/chimney system, made of stainless steel, with a sealing ring. Metaloterm® MF is a universal flue/chimney system that is suitable for both high and low temperatures, non-condensing and condensing applications with flue gasses in positive and negative pressure. It can resist a chimney fire.



Therefore the system is suited for a wide range of applications such as boilers, stoves and ovens. The product range also contains a wide variety of silencers. For Passive houses, the Metaloterm assortment provides the Iso-block which can be combined with MF. The system can also be used for CHP applications, in this case, a special VITON® sealing ring might be necessary.

Due to the proven quality, Metaloterm® MF has a 10-year guarantee.

APPLICATIONS

- Atmospheric gas-fired boilers
- Condensing boilers
- Wood-fired stoves
- Industrial ovens, large-scale establishments

ADVANTAGES

- Universal chimney/flue system
- Inner- and outer wall from high quality stainless steel
- No terminal bridges, uninterrupted insulation from base plate to top stub
- Stress free thermal expansion
- Fast-build system without the need of sealants
- Compatible with system Metaloterm® ME, UE and EN
- High density and high quality insulation
- High-temperature silicone sealing ring
- Lightweight elements
- Immediately ready for use
- Chimney fire resistant

For stove and chimney installers – whenever you register an installation with our easy to use, online guarantee registration portal, you will now accrue points based on the number of installations. So [click here](#) to start and register your installations, taking full advantage of our Lifetime Guarantee on Flex and ICID, as well as guarantees on all our other ranges, and to start earning points

[MF brochure](#)

[Click here](#) to view Certificates and Declarations of Performance

CE approved | EN 1856-1

T200 P1/H1 W V2 L50040 O10
T450 N1 W V2 L50040 G60
T450 N1 D V3 L50040 G60 (Scenario 1: Combustible Floor & Combustible Enclosure)
T450 N1 W V2 L50040 G60
T450 N1 D V3 L50040 G50 (Scenario 2: Non combustible Floor and Non Combustible enclosure, or in Free Air)

CE approved | EN 1856-2:

T200 P1/H1 W V2 L50040 O10 M
T450 N1 W V2 L50040 O40 M
T450 N1 D V3 L50040 G70 M

* Above CE designations refer to Ø100-300 – For larger diameters refer to Schiedel Metaloterm website.

DECLARATION OF PERFORMANCE / FIRE RATING



FREE Access to advanced CAD modelling files.

Please visit our external BIM (Business Information Modelling) for access to advanced modelling files in a number of formats. Please note that you will have to register and login for access to the files.

[Click here to access our BIM files.](#)