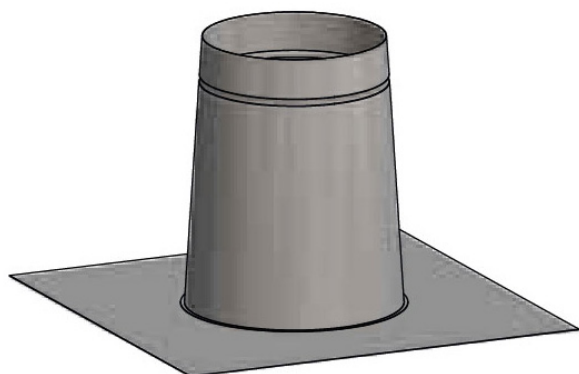





Vantage Roof flashing



Stocks available. Please contact us on 0191 4161150 or email sales.uk@schiedel.com to purchase this product. List pricing is shown below.

Download the brochure for dimensions and other details.

 Vantage Twin Wall Flue Download	1		
	6		
	5		
	3	ROOF_FLASH 125/0/0.5/304/BA/EX	
	9		
1	165392	ROOF_FLASH 125/0/0.3/304/BLACK/EX	24.59
	165393	ROOF_FLASH 150/0/0.3/304/BA/EX	21.63
	165394	ROOF_FLASH 150/0/0.3/304/BLACK/EX	27.05
	165395	ROOF_FLASH 180/0/0.3/304/BA/EX	23.60



165396	ROOF_FLASH 200/0/0.3/304/BA/EX	25.57
165441	ROOF_FLASH /125/20-45/0.5/304/BA/EX	10.61
165442	ROOF_FLASH /125/20-45/0.5/304/BLACK/EX	13.27
165443	ROOF_FLASH /150/20-45/0.5/304/BA/EX	11.56
165444	ROOF_FLASH /150/20-45/0.5/304/BLACK/EX	14.44
165445	ROOF_FLASH /175/20-45/0.5/304/BA/EX	12.54
165446	ROOF_FLASH /200/20-45/0.5/304/BA/EX	14.24

Vantage is a quality twin wall chimney system with a quick lock jointing system. It is used for wood burning or for solid fuel stoves.

With a quick lock jointing system. The components have a twin wall construction with a male spigot and a female socket to provide simple and rapid installation.

With its fully sealed components, Vantage can be installed both internally and externally. Vantage is supplied with a ten year conditional warranty.



PRODUCT DESCRIPTION

Applications

- Gas-fired stoves
- Wood-fired stoves
- Approved solid fuels
- Oil-fired appliances

Key features

- 10 year warranty
- Suitable for internal and external applications Distance to combustibles 60mm (50mm in free air)
- Also available in black powder coated finish
- Easy to install Twist-lock system Weatherproof, fully sealed components High density, mineral wool insulation Made from high grade stainless steel
- 316L stainless steel inner wall for the highest corrosion resistance
- 304 stainless steel outer wall in an attractive, polished finish

Technical characteristics

Application		Chimney/Flue system			
Operating mode		Dry			
Pressure		Negative pressure			
Operating Temperature		450 oC / 600 oC			
Thermal Shock		1000 oC [max 30 min]			
Inner Wall	material	AISI 316L/EN 1.4404			
	thickness	0.5 mm			
Outer wall	material	AISI 304 BA/EN 1.4301			
	thickness	0.5 mm			
Insulation	type	Mineral wool			
	thickness	25 mm			
Fuel Type		Wood/Gas/Oil/Approved Solid Fuels			
ID mm	125(5") 150(6") 175(7") 200(8")				
OD mm	175	200	230	250	
Cross section cm ²	123	177	241	314	
Weight ±kg/m	5.5	6.5	7.5	8.0	
Chimney diameter					

The chimney size should be as recommended by the appliance manufacturer. Where there is a requirement for a flue diameter smaller than the appliance spigot, then the operational requirements of the appliance and the configuration of the flue must satisfy the flue sizing requirements of EN13384—1 for single appliances.

CE approved

EN1856: T450 N1 D V3 L50050 G50 [in free air]

EN1856: T450 N1 D V3 L50050 G60 [in a combustible shaft with ventilated fire stops]

EN1856: T600 N1 D V3 L50050 G100 [in a combustible shaft with ventilated fire stops]