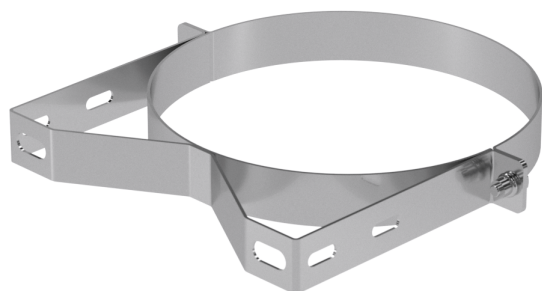




## Structural Wall Band (50mm)




This product is part of Schiedel's accessory range which can be used on a variety of systems. Please consult with our customer service team for advice on it's suitability.

Schiedel have a range of chimney and flue components suitable for all types of appliances, from wood stoves to CHP system and gas boiler system to data centre generators, and more.

## VARIATIONS

SKU	Int mm	Colour	Ext mm	Price
133782	500	Plain	600	
104430	600	Plain	700	
126654	125	Black	180	
127218	150	Black	200	
128112	180	Plain	235	
128596	200	Plain	256	

For stove and chimney installers – whenever you register an installation with our easy to use, online guarantee registration portal, you will now accrue points based on the number of installations. So [click here](#) to start and register your installations, taking full advantage of our Lifetime Guarantee on Flex and ICID, as well as guarantees on all our other ranges, and to start earning points

 Schiedel is the first European chimney manufacturer to have performed the tests according to this latest fire resistance standard for chimneys. European standard BS EN 1366-13:2019 “Fire resistance tests for service installations, Part 13: Chimneys” and has reached EI 120 classification for our Double Wall Insulated System Chimney ICS in a closed scenario (type A) for both vertical and horizontal set-ups.

ICS 5000 is tested and approved in both 25mm and 50mm variants to BS EN 1856-1 as a System Chimney and to BS EN 1856-2 as



a connecting flue pipe with the following designations

**System Chimney BS EN 1856-1 (TÜV 0036 CPR 9195 027)**

**ICS25 5000**

T600 H1 D V3 L50050 O75\* T200 H1 W V2 L50050 O50\*\*

**\*Distance to Combustibles**

\*Ø80-Ø300 distance – 75mm

\*Ø350-Ø450 distance – 112.5mm

\*Ø500- Ø600 distance – 150mm

\*\*Ø80-Ø200 distance – 50mm

**ICS50 5000**

T600 H1 D V3 L50050 O25\*

**\*Distance to Combustibles**

\*Ø80-Ø300 distance – 25mm

\*Ø350-Ø450 distance – 37.5mm

\*Ø500- Ø600 distance – 50mm

**Connecting Flue Pipe BS EN 1856-2 (TÜV 0036 CPR 9195 038)**

T600 H1 D V3 L50050 O100 M

**Connecting Flue Pipe BS EN 1856-2 (TÜV 0036 CPR 9195 036)**

T600 H1 D V3 L50050 O100 M

**EI 120 Fire rating to BS EN 1366-13 Chimneys**

ICS25 5000 and ICS50 5000: Horizontal and Vertical

**Corrosion testing on Gas, Oil, Solid Fuel (TÜV 0036 CPR 9195 027)**

Gastec, MPA, TÜV

[ICS 5000 brochure](#)


[ICS 5000 installation instructions](#)

[Click here](#) to view Certificates and Declarations of Performance

[ICS brochure](#)

[ICS installation instructions](#)

[Click here](#) to view Certificates and Declarations of Performance

 Schiedel is the first European chimney manufacturer to have performed the tests according to this latest fire resistance standard for chimneys. European standard BS EN 1366-13:2019 “Fire resistance tests for service installations, Part 13: Chimneys” and has reached EI 120 classification for our Double Wall Insulated System Chimney ICS in a closed scenario (type A) for both vertical and horizontal set-ups.

ICS is CE Certified to EN1856-1 TÜV 0036 CPR 9195 001 with designations



ICS is CE Certified to EN1856-2 TÜV 0036 CPR 9195 041 with designations

#### **System Chimney EN1856-1**

T450 N1 W V2 L50050 G60

T450 N1 D V3 L50050 G60

60mm Distance to combustibles in a combustible shaft\*

T450 N1 W V2 L50050 G50

T450 N1 D V3 L50050 G50

50mm Distance to combustibles in a non combustible shaft or in free air\*

T200 P1 W V2 L50050 O00

Zero distance to combustibles\*

#### **Connecting Flue Pipe EN1856-2**

T450 N1 D V2 L50050 G100 M

- Manufactured under a Quality Management Scheme approved to BS EN ISO 9001
- 4 Hour Fire Rating to BS476 Part 20
- Certified for corrosion resistance on gas, oil and solid fuel by Gastec, MPA and TÜV
- HETAS listed for use on solid fuel applications.