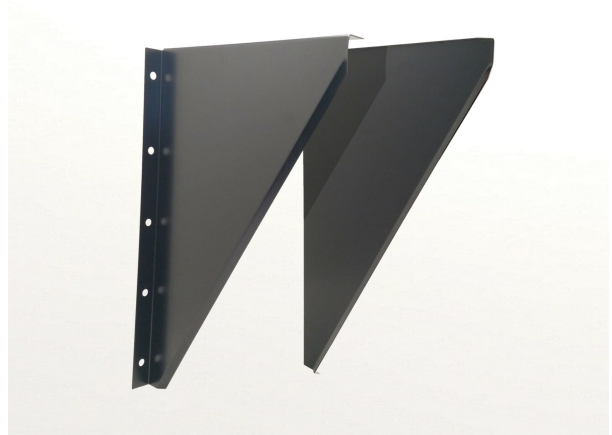




Wall support side plates



This product is part of Schiedel's accessory range which can be used on a variety of systems. Please consult with our customer service team for advice on it's suitability.

Schiedel have a range of chimney and flue components suitable for all types of appliances, from wood stoves to CHP system and gas boiler system to data centre generators, and more.

VARIATIONS

SKU	Colour	Int mm	Ext	A	B	C	X	Y	Price
101339	Plain	180	280	345	470	100	35	28	
101050	Plain	350	400	465	670	100	35	28	
101051	Plain	400	450	515	670	100	35	28	
101046	Plain	180	230	310	470	100	35	28	
101047	Plain	200	250	315	470	100	35	28	
101048	Plain	250	300	365	470	100	35	28	
101049	Plain	300	350	415	470	100	35	28	
101052	Plain	450	500	565	670	100	35	28	
101053	Plain	500	550	615	870	100	35	28	
101054	Plain	600	650	715	870	100	35	28	
101042	Plain	080	130	220	470	100	35	28	
101044	Plain	130	180	270	470	100	35	28	
101045	Plain	150	200	290	470	100	35	28	
127445	Plain	200	256	345	470	100	NA	NA	

For stove and chimney installers – whenever you register an installation with our easy to use, online guarantee registration portal,



you will now accrue points based on the number of installations. So [click here](#) to start and register your installations, taking full advantage of our Lifetime Guarantee on Flex and ICID, as well as guarantees on all our other ranges, and to start earning points



[UK Plus brochure](#)

[Download](#)



[UK Plus DOPs and certificates](#)

[Download](#)



[UK Plus DOPs and certificates](#)

[Download](#)

EN 1856-1 System chimney CE Designation:

036 – CPR – 91236-057 Production: Teplice (CZ)

T200 – P1 – W – V2 – L50040 – O00

T200 – P1 – W – Vm – L20040 – O50

T600 – N1 – W – V2 – L50040 – O50

T600 – N1 – W – Vm – L20040 – O50

EN 1856-2 Connecting flue pipe CE Designation:

0036 – CPR – 91236-058 Production: Teplice (CZ)

T200 – P1 – W – V2 – L50040 – O30

T200 – P1 – W – Vm – L20040 – O30



[ICS DOPs and certificates](#)

[Download](#)

Schiedel is the first European chimney manufacturer to have performed the tests according to this latest fire resistance standard for chimneys. European standard BS EN 1366-13:2019 "Fire resistance tests for service installations, Part 13: Chimneys" and has reached EI 120 classification for our Double Wall Insulated System Chimney ICS in a closed scenario (type A) for both vertical and horizontal set-ups.

ICS 5000 is tested and approved in both 25mm and 50mm variants to BS EN 1856-1 as a System Chimney and to BS EN 1856-2 as a connecting flue pipe with the following designations

System Chimney BS EN 1856-1 (TÜV 0036 CPR 9195 027)

ICS25 5000

T600 H1 D V3 L50050 O75* T200 H1 W V2 L50050 O50**

*Distance to Combustibles

*Ø80-Ø300 distance – 75mm



- *Ø350-Ø450 distance - 112.5mm
- *Ø500- Ø600 distance - 150mm
- **Ø80-Ø200 distance - 50mm

ICS50 5000

T600 H1 D V3 L50050 O25*

*Distance to Combustibles

- *Ø80-Ø300 distance - 25mm
- *Ø350-Ø450 distance - 37.5mm
- *Ø500- Ø600 distance - 50mm

Connecting Flue Pipe BS EN 1856-2 (TÜV 0036 CPR 9195 038)

T600 H1 D V3 L50050 O100 M

Connecting Flue Pipe BS EN 1856-2 (TÜV 0036 CPR 9195 036)

T600 H1 D V3 L50050 O100 M

EI 120 Fire rating to BS EN 1366-13 Chimneys

ICS25 5000 and ICS50 5000: Horizontal and Vertical

Corrosion testing on Gas, Oil, Solid Fuel (TÜV 0036 CPR 9195 027)

Gastec, MPA, TÜV



[ICS 5000 brochure](#)

[Download](#)



[ICS 5000 installation instructions](#)

[Download](#)



[ICS brochure](#)

[Download](#)



[ICS installation instructions](#)

[Download](#)



[ICS 25 DWG files](#)

[Download](#)



[ICS DOPs and certificates](#)

[Download](#)

Schiedel is the first European chimney manufacturer to have performed the tests according to this latest fire resistance standard for chimneys. European standard BS EN 1366-13:2019 "Fire resistance tests for service installations, Part 13: Chimneys" and has



reached EI 120 classification for our Double Wall Insulated System Chimney ICS in a closed scenario (type A) for both vertical and horizontal set-ups.

ICS is CE Certified to EN1856-1 TÜV 0036 CPR 9195 001 with designations

ICS is CE Certified to EN1856-2 TÜV 0036 CPR 9195 041 with designations

System Chimney EN1856-1

T450 N1 W V2 L50050 G60

T450 N1 D V3 L50050 G60

60mm Distance to combustibles in a combustible shaft*

T450 N1 W V2 L50050 G50

T450 N1 D V3 L50050 G50

50mm Distance to combustibles in a non combustible shaft or in free air*

T200 P1 W V2 L50050 O00

Zero distance to combustibles*

Connecting Flue Pipe EN1856-2

T450 N1 D V2 L50050 G100 M

- Manufactured under a Quality Management Scheme approved to BS EN ISO 9001
- 4 Hour Fire Rating to BS476 Part 20
- Certified for corrosion resistance on gas, oil and solid fuel by Gastec, MPA and TÜV
- HETAS listed for use on solid fuel applications.