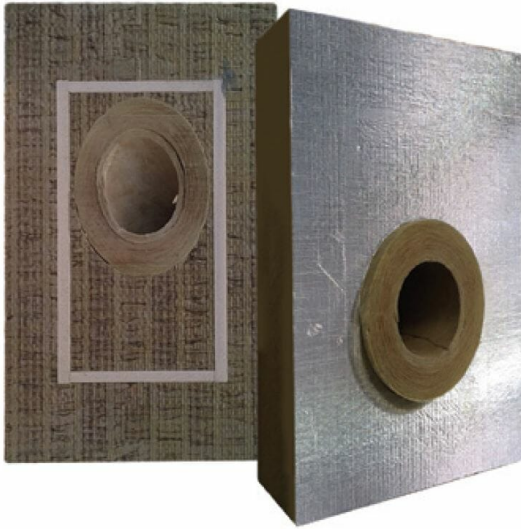


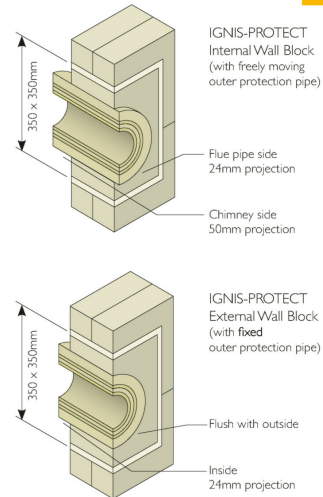


IGNIS PROTECT 45 / 90 DEGREE VERSION



IGNIS PROTECT INTERNAL / EXTERNAL

SCHIEDEL



Visit www.schiedel.com/uk for more information

A **standard**
INDUSTRIES COMPANY

Ignis Protect

Schiedel Chimney Systems is designed to allow a chimney flue to pass through a combustible wall in a timber framed building.

In order to meet the latest European building regulations, specific leakage and performance criteria have to be met, which are much more stringent than in the past. These criteria are key in relation to chimney products passing through combustible walls.



IGNIS-PROTECT,
Winner of Best Product Award
Hearth & Home Exhibition 2015.



Protected in accordance with
European patent specification
EP I 878 849 B1

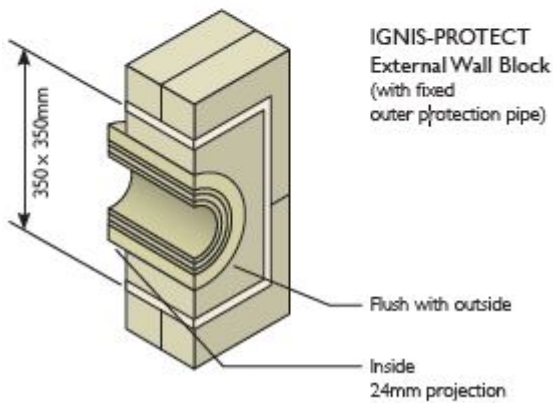
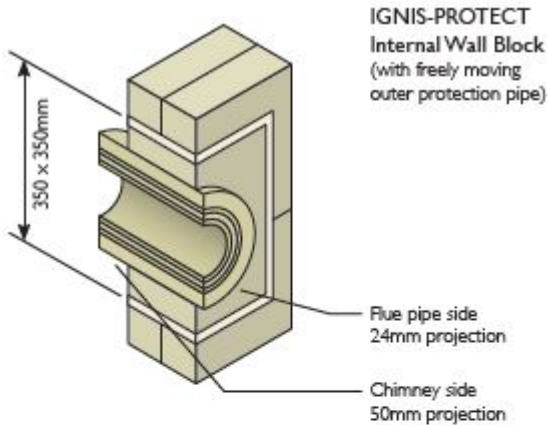
VARIATIONS

SKU	Price	Thickness	Width	A	B	C	Version
149530		100	565	1020	565	100	45 deg
149531		150	565	1020	565	150	45 deg



SKU	Price	Thickness	Width	A	B	C	Version
149532		200	565	1020	565	200	45 deg
149533		250	565	1320	565	250	45 deg
149534		300	565	1320	565	300	45 deg
149535		350	565	1320	565	350	45 deg
149536		400	565	1320	565	400	45 deg
144032		450	565	1320	565	450	45 deg
144033		466	565	1320	565	466	45 deg
144034		500	565	1320	565	500	45 deg
101841		150	565	700	565	150	90 deg
101842		200	565	700	565	200	90 deg
101843		250	565	700	565	250	90 deg
101844		300	565	700	565	300	90 deg
101845		350	565	700	565	350	90 deg
101846		400	565	700	565	400	90 deg

PRODUCT DESCRIPTION



Product Features

- Suitable for SW and DW connecting flue pipes passing through interior or exterior walls made of combustible materials
- Available in two versions:
 - For exterior walls (with aluminum lamination inside face)
 - For interior walls (without aluminum laminate and with an extended removable core)
- Available in both 90° and 45° versions
- For flue gas temperature up to:
 - 450 °C for SW connecting flue pipes (T450)
 - 600 °C for DW connecting flue pipes (T600)
- Max. 100 °C surface temperature during soot fire
- Monolithic component made of mineral wool, density 120 kg/m, building material class A1
- Internal face finished with aluminum laminate
- External face made with textured surface to facilitate facade rendering
- Removable pipe sections DN 125, 130, 150, 180, 200 mm
- IGNIS-PROTECT can be used without any additional protection
- Available in a range of standard wall thicknesses between 100mm -500mm

Installation instructions are available as part of our twin wall instructions.

[wpedm_package id='16975']



[Protect Box
installation
instructions](#) [Download](#)



[Sirius
stove
brochure](#) [Download](#)



[Sirius
stove
operating
manual](#) [Download](#)

A useful app with guides on installation as well as step-by-step video guides.

This app was designed for installers to have all the information they require in a few quick clicks. This makes it easier for installers rather than having to carry paperwork during the installation process with video breakdowns of each stage of the installation process.

Download the iPhone and iPad version in the App Store and Android version in the Google Play Store.



We are confident in our products and so offer you (the owner) a generous guarantee in relation to the ICID system (the System).

Provided that you comply in full with Your Responsibilities (below) and subject to the Small Print (below), we guarantee to you that the System will be free from defects for whichever is the greater of:

a period equal to the guarantee period of the appliance to which the system is first connected; or
20 years.

For example, if your System is fitted to an appliance with a guarantee period of 10 years, we will still guarantee your System for 20 years.

In the unlikely event that the System becomes defective during the guarantee period, we will provide a like-for-like replacement for free (subject to your compliance with Your Responsibilities and subject to the Small Print). If the same model is no longer available, we will replace it with a suitable alternative.

When we say 'no quibbles' we mean it and so the guarantee we offer is a straightforward one; we've set out below what is covered and what isn't by the guarantee as well as how to ensure you benefit from it.

YOUR RESPONSIBILITIES

To benefit from our guarantee, you must:

Register your product within 30 days of installation at www.schiedel.co.uk and provide us with any evidence we reasonably request to prove that your System has been fitted by a HETAS approved installer or if not, has been signed off by a Building Control Inspector prior to use.

Familiarise yourself with the User Guide and comply with its provisions in full during the lifetime of your usage of the Liner (including by keeping the required records safe). Failure to do so will invalidate any guarantee claim.

HOW TO CLAIM UNDER YOUR GUARANTEE

To claim under your guarantee, please email us at info@schiedel.co.uk. You will be asked to provide proof that you have complied in full with the User Guide (for example, by providing cleaning records) and we will then assess your claim, keeping you fully informed.

SMALL PRINT



- Your guarantee is effective from the date on which your System is installed. The guarantee extends only to us providing you with a replacement System. We will pay for the delivery of that replacement to the address you have registered but you are responsible for any costs related to the removal and transit of the defective System and the installation (and any associated costs) of the replacement System and the provision of any necessary ancillary products, fittings or consumables.
- The guarantee does not apply to the extent that defects in a System arise as a result of: (1) use of fittings other than approved fittings; (2) any failure to comply with the instructions set out in the User Guide (including those instructions relating to care and servicing of your System); (3) any alteration or repairs you make to it (or are made on your behalf) without our express written permission; (4) any accidental damage suffered during transit or otherwise; (5) any damage to the System that arises as a result of the installation of the System (our guarantee is offered in respect of the System product alone and does not cover the ancillary products or the consumables (such as lip seal gaskets) or the workmanship of any installation services you may obtain from any third party); or, (6) any negligent or other improper use.
- If we replace your System under this guarantee, the guarantee period will not be extended.
- If you move house, you may transfer the benefit of the remaining period of the guarantee to the new home owner within 3 months of the change of ownership. It is your responsibility to transfer the guarantee by emailing us at info@schiedel.co.uk and to notify the new owner of the terms of the guarantee (including the new owner's responsibilities). A failure to notify us of a transfer within the timescales will invalidate the guarantee.
- Where you claim that a System is defective, we reserve the right (1) to carry out any tests on that System, and/or (2) to require access to that System, in both cases to satisfy ourselves that you have complied in full with your responsibilities (including by adhering to the User Guide) and that your claim is valid. Please cooperate with any reasonable requests we make in this regard.
- This guarantee is offered in addition to your legal rights as a consumer.

ICID Plus is CE Certified to EN1856-1 TÜV 0036 CPR 9195 010 with designations:

ICID Plus is CE Certified to EN1856-2 TÜV 0036 CPR 9195 042 with designations:

System Chimney EN1856-1

T450 N1 W V2 L50050 G60

T450 N1 D V3 L50050 G60

60mm Distance to combustibles running through a combustible floor using G60 round firestop

T450 N1 W V2 L50050

G50 T450 N1 D V3 L50050 G50

50mm Distance to combustibles a) running through a combustible floor using G50 ventilated fire stops b) In a ventilated shaft using G50 or G60 round ventilated fire stops in combination with G50 ventilated support plate at base and G50 ventilated fire stop plate at top of shaft. c) In free air

T200 P1 W V2 L50050 O00

Zero distance to combustibles

Connecting Flue Pipe EN1856-2

T450 N1 D V2 L50050 G100 M

- Manufactured under a Quality Management Scheme approved to BS EN ISO 9001
- 4 Hour Fire Rating to BS476 Part 20
- Certified for corrosion resistance on gas, oil and solid fuel by Gastec, MPA and TÜV
- HETAS listed for use on solid fuel applications.



ICID Plus brochure

[Download](#)



ICID Plus installation instructions

[Download](#)



ICID DWG files

[Download](#)



ICID
approvals [Download](#)

ZIP