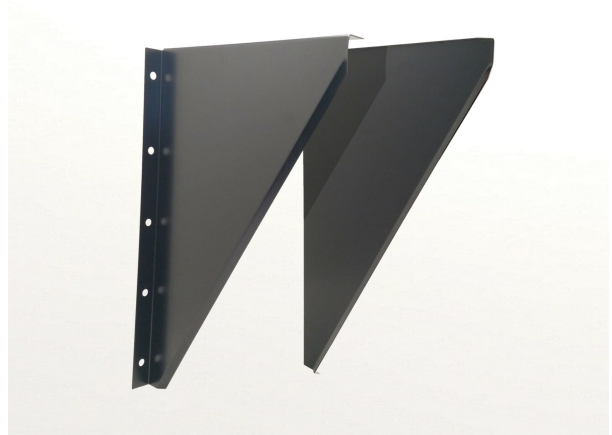




Wall support side plates (ICID)



This product is part of Schiedel's accessory range which can be used on a variety of systems. Please consult with our customer service team for advice on it's suitability.

Schiedel have a range of chimney and flue components suitable for all types of appliances, from wood stoves to CHP system and gas boiler system to data centre generators, and more.

VARIATIONS

SKU	Colour	Int mm	Ext	A	B	C	X	Y	Price
148186	Black	180	NA	NA	NA	NA	NA	NA	
126862	Plain	180	NA	NA	NA	NA	NA	NA	
125357	Plain	125	180	275	470	100	NA	NA	
126136	Plain	150	200	295	470	100	NA	NA	
125355	Black	125	180	275	470	100	NA	NA	
126133	Black	150	200	295	470	100	NA	NA	
101043	Plain	100	150	240	470	100	35	28	

For stove and chimney installers – whenever you register an installation with our easy to use, online guarantee registration portal, you will now accrue points based on the number of installations. So [click here](#) to start and register your installations, taking full advantage of our Lifetime Guarantee on Flex and ICID, as well as guarantees on all our other ranges, and to start earning points

[UK Plus brochure](#)

[Click here](#) to view Certificates and Declarations of Performance

EN 1856-1 System chimney CE Designation:



036 – CPR – 91236-057 Production: Teplice (CZ)

T200 – P1 – W – V2 – L50040 – O00

T200 – P1 – W – Vm – L20040 – O50

T600 – N1 – W – V2 – L50040 – O50

T600 – N1 – W – Vm – L20040 – O50

EN 1856-2 Connecting flue pipe CE Designation:

0036 – CPR – 91236-058 Production: Teplice (CZ)


T200 – P1 – W – V2 – L50040 – O30

T200 – P1 – W – Vm – L20040 – O30

[ICS brochure](#)

[ICS installation instructions](#)

[Click here](#) to view Certificates and Declarations of Performance

 Schiedel is the first European chimney manufacturer to have performed the tests according to this latest fire resistance standard for chimneys. European standard BS EN 1366-13:2019 “Fire resistance tests for service installations, Part 13: Chimneys” and has reached EI 120 classification for our Double Wall Insulated System Chimney ICS in a closed scenario (type A) for both vertical and horizontal set-ups.

ICS is CE Certified to EN1856-1 TÜV 0036 CPR 9195 001 with designations

ICS is CE Certified to EN1856-2 TÜV 0036 CPR 9195 041 with designations

System Chimney EN1856-1

T450 N1 W V2 L50050 G60

T450 N1 D V3 L50050 G60

60mm Distance to combustibles in a combustible shaft*

T450 N1 W V2 L50050 G50

T450 N1 D V3 L50050 G50

50mm Distance to combustibles in a non combustible shaft or in free air*

T200 P1 W V2 L50050 O00

Zero distance to combustibles*

Connecting Flue Pipe EN1856-2

T450 N1 D V2 L50050 G100 M

- Manufactured under a Quality Management Scheme approved to BS EN ISO 9001
- 4 Hour Fire Rating to BS476 Part 20
- Certified for corrosion resistance on gas, oil and solid fuel by Gastec, MPA and TÜV
- HETAS listed for use on solid fuel applications.